

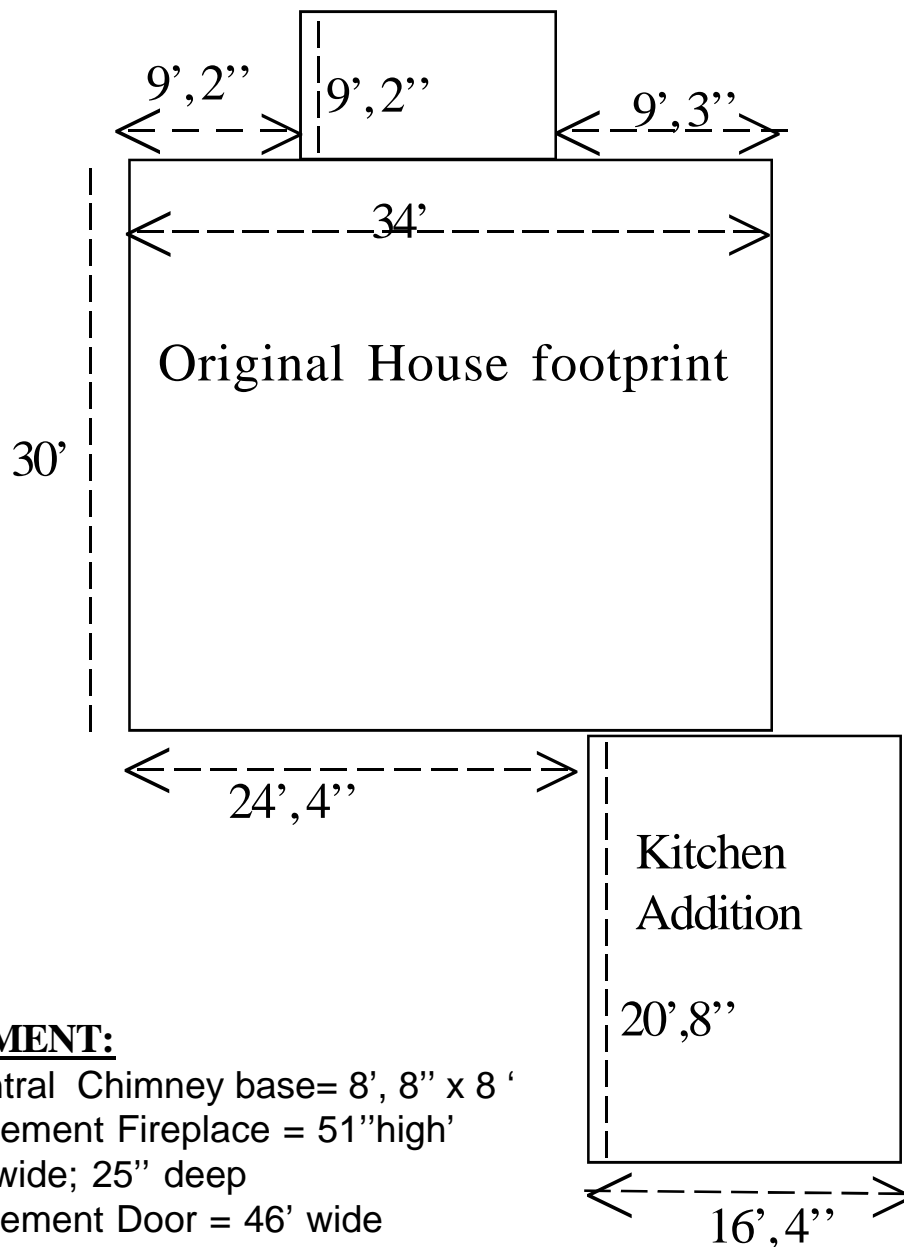
# Twitchell-Rowland Homestead

*Oxford, Connecticut*

Outer Dimensions at ground level.

Christian Street

Front Porch



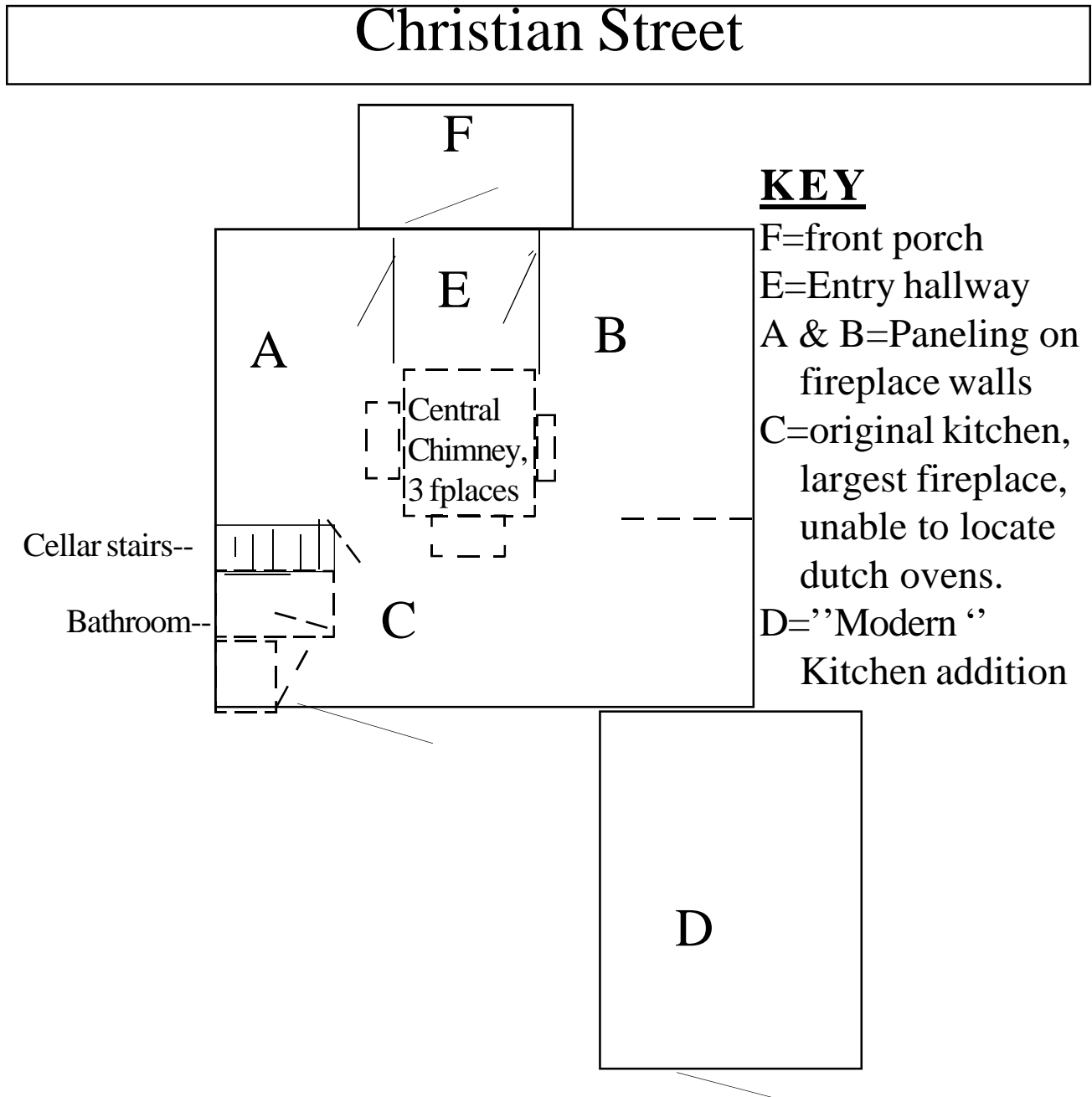
## **BASEMENT:**

- Central Chimney base = 8', 8" x 8'
- Basement Fireplace = 51" high  
59" wide; 25" deep
- Basement Door = 46' wide

# Twitchell-Rowland Homestead

*Oxford, Connecticut*

**Rough Layout first floor (NOT scale).**

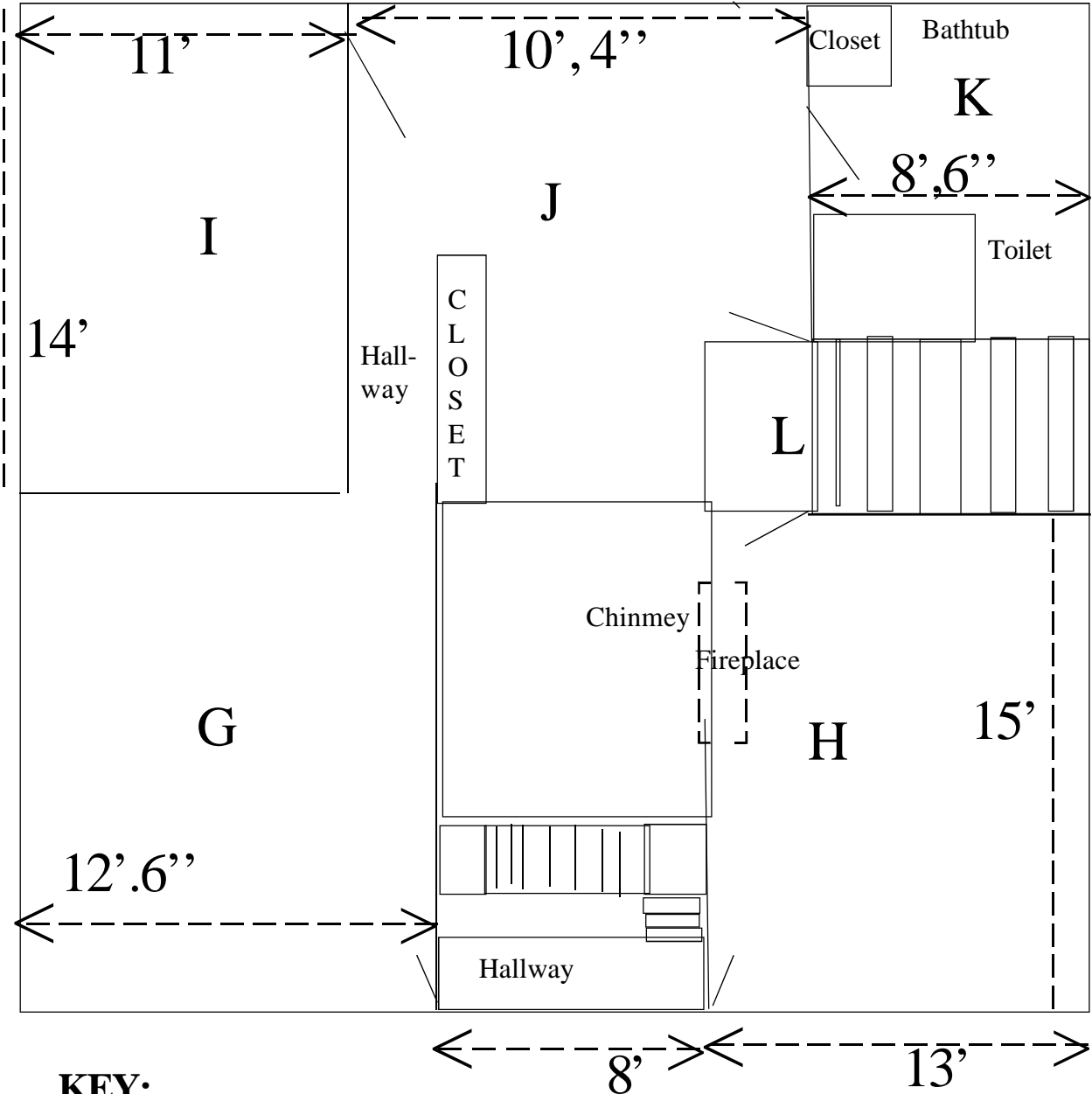


Tenants Still living in first floor, rooms not measured.

# Twitchell-Rowland Homestead

*Oxford, Connecticut*

**“Rough” Measurements, second floor.**



**KEY:**

G. & H= Paneling on chimney walls, with Fireplace in “Room H”

I= room, formerly two rooms

J= Kitchen dormer area

K= Bathroom ; L= Stairs to outside, and landing

**Christian Street**