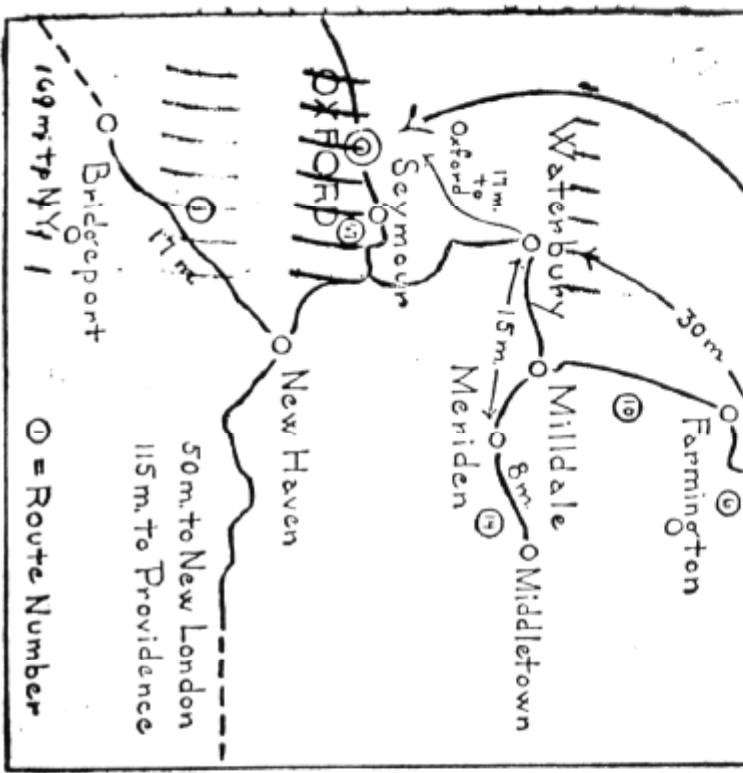




24 m. to Spfld.
70 m. to Worcester
110 m. to Boston

CONNECTICUT DOG TEAM
TEA HOUSE
of Grenfell Labrador Industries
at Oxford, Conn.



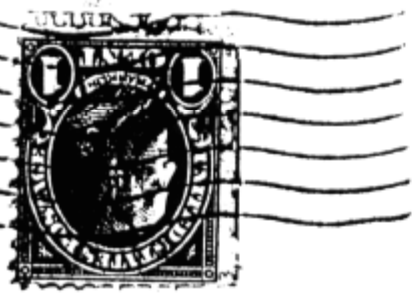
⊙ = Route Number

*Hi Wilfred and
fady see for what
we present at the
opening -
May 19 - 1934
Tea - 3-6 35 cent*

The Connecticut Dog Team Tea House (usually "Mary's Little Lamb Tea House") is operated by Grenfell Labrador Industries, backed by a New Haven committee, for the benefit of Sir Wilfred Grenfell's Labrador work. The 1934 season is from May 19th-October 13th. Tea reservations may be made by telephone to the resident manager.

NEW HAVEN
MAY 16
10 PM
1934
CONN.

*Wm. A. N. Hedges
89 E. Main St.
Meriden
Conn
OXF - 30*



252